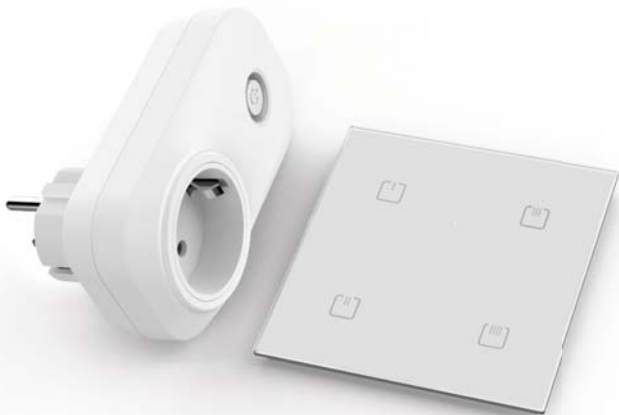


WIRELESS SWITCH SOCKET

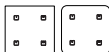
(LUXURY VERSION)

EN



Combination of iNELS wall-mounted wireless controller and switch socket.
It is used to control el. appliances, lights, fans, etc.

Content



Glass touch controller - 4 buttons, SHARP RFGB-40/W, RFGB-40/B
Glass touch controller - 4 buttons, ROUND RFGB-240/W, RFGB-240/B



Schuko



British

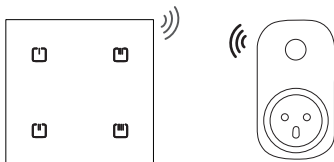


French

Switching socket-plug
RFSC-61N

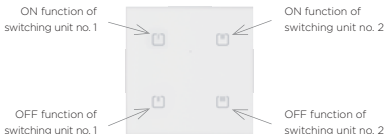
EAN 8595188183222 (Glass touch controller - 4 buttons, BLACK SHARP + Switching socket-plug "French")
EAN 8595188183420 (Glass touch controller - 4 buttons, BLACK SHARP + Switching socket-plug "Schuko")
EAN 8595188183321 (Glass touch controller - 4 buttons, BLACK SHARP + Switching socket-plug "British")
EAN 8595188183239 (Glass touch controller - 4 buttons, WHITE SHARP + Switching socket-plug "French")
EAN 8595188183437 (Glass touch controller - 4 buttons, WHITE SHARP + Switching socket-plug "Schuko")
EAN 8595188183338 (Glass touch controller - 4 buttons, WHITE SHARP + Switching socket-plug "British")
EAN 8595188183246 (Glass touch controller - 4 buttons, BLACK ROUND + Switching socket-plug "French")
EAN 8595188183444 (Glass touch controller - 4 buttons, BLACK ROUND + Switching socket-plug "Schuko")
EAN 8595188183345 (Glass touch controller - 4 buttons, BLACK ROUND + Switching socket-plug "British")
EAN 8595188183253 (Glass touch controller - 4 buttons, WHITE ROUND + Switching socket-plug "French")
EAN 8595188183451 (Glass touch controller - 4 buttons, WHITE ROUND + Switching socket-plug "Schuko")
EAN 8595188183352 (Glass touch controller - 4 buttons, WHITE ROUND + Switching socket-plug "British")

Schema



The individual **elements in the iNELS set** are paired and their **functions are preset**.

iNELS Wireless switch socket enables the basic function of controlling electrical appliances - **ON / OFF**.



The settings of the wall controllers can be changed - see detailed manuals of iNELS elements.



Glass touch controller - 4 buttons, SHARP/ROUND, RFGB-40/RFGB-240

Detailed manual



RFGB-40



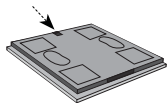
RFGB-240

- RFGB-40/B - glass touch controller, SHARP - black, 4-buttons
- RFGB-40/W - glass touch controller, SHARP - white, 4-buttons
- RFGB-240/B - glass touch controller, ROUND - black, 4-buttons
- RFGB-240/W - glass touch controller, ROUND - white, 4-buttons

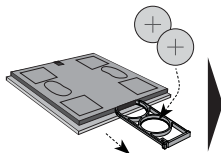
Characteristics

- The wireless control - used to control, lights, gate, garage door, shutters, etc.
- Thickness only 8 mm.
- 4 capacitive buttons allow you to control 2/4 components.
- Fast installation on any surface - the rear base allows screwing to the walls, gluing with doublesided tape or just laying on the table

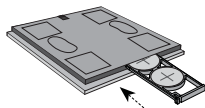
Replacement of a battery in 3 steps



Press to open the plug-in battery holder
(you can use a flat-blade screwdriver
to open it).



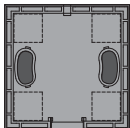
Insert the CR2032 battery into Battery
holder. Watch out for polarity.



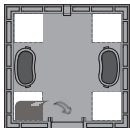
Insert the holder into
the device.

Assembly

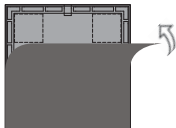
Adhesive



Peel off one protective layer on the doublesided adhesive sheets and stick them to the marked places on the controller.

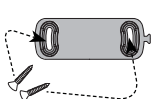


Peel off the second protective layer on the doublesided adhesive sheets and place the control in the prepared place.

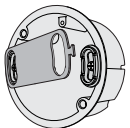


If the device is installed on glass, cover it with a cover foil

In the installation box or on the wall



Mount the snap bar on the controller into the installation box or on the wall



Place the mounting jig on the KU box and screw it on



Snap on the controller.

Technical parameters**RFGB-40/RFGB-240**

Power voltage:	2x 3 V battery CR 2032
Battery life:	about 2 years depending on the frequency of use
Transmission indication	Red LED
Number of capacitive buttons:	4
Communication Protocol:	RFIO
Frequency:	868.5 MHz
Signal transmission method:	one-way addressed message
Range:	in the open up to 200 m
Material:	Glass
Other data	
Operating Temperature:	-10 ... +50 °C (14 ... 122 °F)
Working Position	any
Mounting:	adhesive, screw
Protection	IP20
Pollution degree:	2
Dimension:	SHARP 94 x 94 x 8 mm (3.7" x 3.7" x 0.3") / ROUND 100 x 100 x 8 mm (3.9" x 3.9" x 0.3")
Weight:	SHARP 107 g/ ROUND 108 g
Related standards:	EN 60669, EN 300 220, EN 301 489



Switching socket-plug RFSC-61N (Schuko, French, British)

Detailed manual

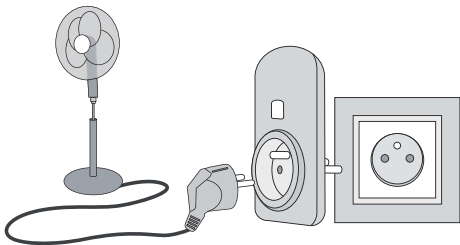


RFSC-61N

Characteristics

- The switched socket with 1 output channel is used to control fans, lamps, heaters and appliances, which are connected by a power cord.
- They can be combined with detectors, controllers, iNELS RF Control system components.
- Thanks to the socket design, installation is simple by direct insertion into the existing socket.
- It enables connection of the switched load up to 16A (4.000 W).
- Multi-function design - button, impulse relay and time function of delayed ON or OFF with time setting of 2 s - 60 min.
- The switched socket may be controlled by up to 32 channels (1 channel represents 1 button on the controller).
- The programming button on the socket is also used for manual control of the output.
- Memory status can be pre-set in the event of a power failure.
- Range up to 200 m (in open space), if the signal is insufficient between the controller and unit, use the signal repeater RFRP-20 or protocol component RFIO2 that support this feature.
- Communication frequency with bidirectional protocol iNELS RF Control2 (RFIO2).
- Produced in 3 designs of sockets and plugs.

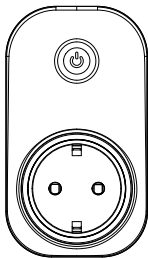
Assembly



Technical parameters**RFSC-61 N/230V**

Supply voltage:	230 V / 50-60Hz
Apparent power:	7 VA
Dissipated power:	0.7 W
Supply voltage tolerance:	+10 %; -15 %
Output:	
Number of contacts:	1x switching (AgSnO ₂)
Rated current:	16 A / AC1
Switching power:	4000 VA / AC1, 384 W / DC
Peak current:	30 A / < 3 s
Switching voltage:	250 V AC1 / 24 V DC
Min. switching power DC:	500 mW
Mechanical service life:	3x10 ⁷
Electrical service life (AC1):	0.7x10 ⁵
Control:	
Manual control:	button PROG (ON/OFF)
Other data:	
Operating temperature:	-15 ... + 50 °C (5 ... +122 °F)
Working position:	any
Protection:	IP30
Overvoltage category:	III.
Contamination degree:	2
Dimensions:	63 x 110 x 74 mm
Weight:	129 g
Related standards:	EN 60730, EN 63044, EN 300 220, EN 301 489

Compatibility

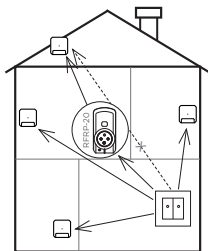







The device can be combined with all system components, controls and devices of iNELS RF Control and iNELS RF Control2.

The detector can be assigned an iNELS RF Control2 (RFIO2) communication protocol.

Radiofrequency signal penetration through various construction materials

Range up to 200 m (2 inch) in open space,



				
60 - 90 %	80 - 95 %	20 - 60 %	0 - 10 %	80- 90 %
brick walls	wooden structures with plaster boards	reinforced concrete	metal partitions	common glass

Warning

Instruction manual is designated for mounting and also for the usage of the device. It is always a part of its packing. Installation and connection can be carried out only by a person with adequate professional qualification with understanding this instruction manual and functions of the device, and while observing all valid regulations. Trouble-free function of the device also depends on transportation, storing and handling. In case you notice any sign of damage, deformation, malfunction or missing part, do not install this device and return it to its seller. It is necessary to treat this product and its parts as electronic waste after its lifetime is terminated. Before starting installation, make sure that all wires, connected parts or terminals are de-energized. While mounting and servicing observe safety regulations, norms, directives and professional, and export regulations for working with electrical devices. Do not touch parts of the device that are energized - life threat. Due to transmissivity of RF signal, observe correct location of RF components in a building where the installation is taking place. RF Control is designated only for mounting in interiors. Devices are not designated for installation into exteriors and humid spaces. The must not be installed into metal switchboards and into plastic switchboards with metal door - transmissivity of RF signal is then impossible. RF Control is not recommended for pulleys etc. - radio-frequency signal can be shielded by an obstruction, interfered, battery of the transceiver can get flat etc. and thus disable remote control.

Designed & Manufactured by:

ELKO EP, s.r.o. Palackého 493, 769 01 Holešov, Všetuly,
Czech republic, www.elkoep.com, Hotline: +420 800 100 671

