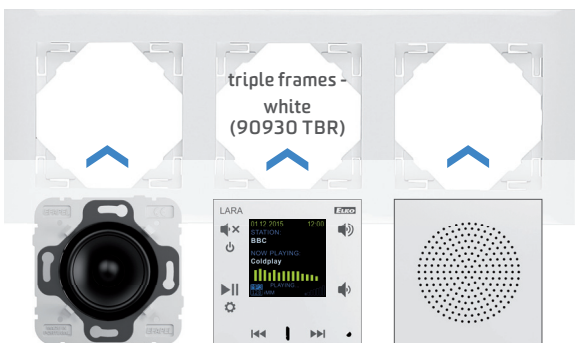


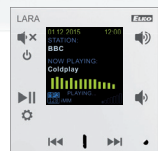
KIT CONTAINS



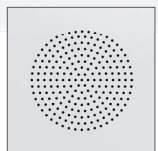
triple frames -
white
(90930 TBR)



2x Speakers 2"
(21581)



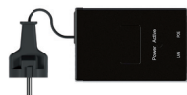
LARA Radio - white
(LARA-R/BR)



2x cover speaker - white
(90710TBR)



Remote
controller
(6508)



PoE
adapter
(6191)



Network
cable, 20 cm
(6702)

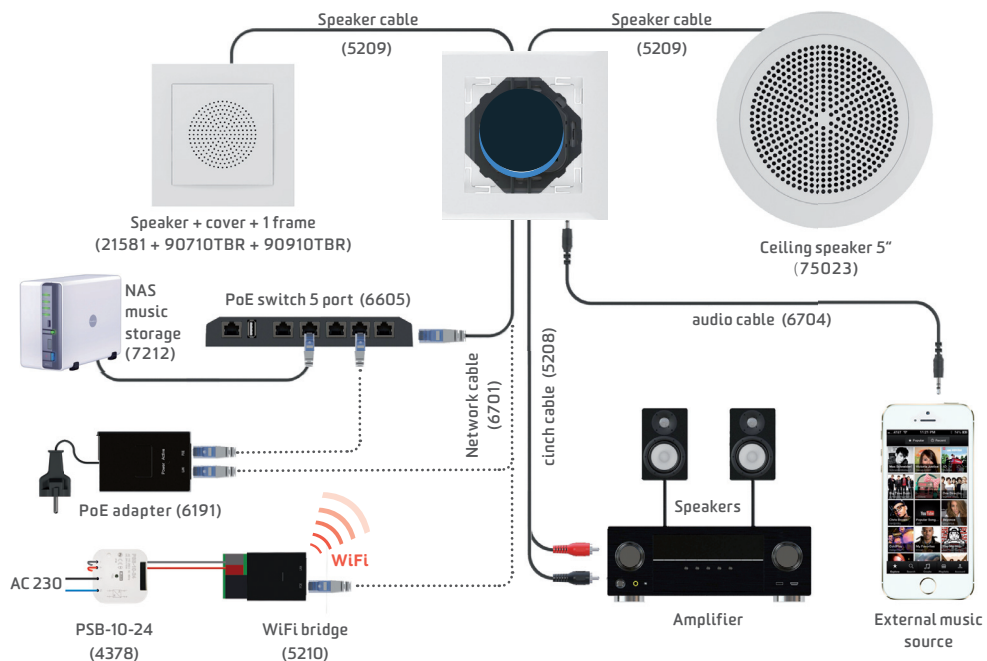


Speaker cable
(5209)

RADIO & MUSIC IN THE SWITCH

KIT FOR CONTROLLING MUSIC, WHICH PERFECTLY FITS IN YOUR HOME'S INTERIOR

LARA is connected to the LAN network via a cable; the power to LARA is provided from LAN network. If the LAN network doesn't allow powering a LARA device, then it is possible to use PoE adapter. LARA can be also connected wirelessly via a WiFi bridge.



INSTALLATION OPTIONS

LARA can be mounted inside your wall (installation box) or offers a surface mounting option. You can use the installation boxes mentioned in the Section "Accessories".



ACCESSORIES

We offer you accessories making installation easier and also extending the LARA functions. More information you will find on www.inels.com/kits

Code: 5208



LARA
cinch
cable

Code: 6704



LARA
aux
cable

Code: 5210



WiFi
bridge

Code: 7212



NAS music storage
network storage/hard drive
with a capacity of 2TB

Code: 4378



Power supply
to the box
PSB-10-24



Mounting boxes for hollow walls

1-gang (6710)
2-gang (6711)
3-gang (6712)
4-gang (6713)
5-gang (6714)

Flush-mount installation boxes

1-gang (6705)
2-gang (6706)
3-gang (6707)
4-gang (6708)
5-gang (6709)

Code: 10976ABR



Box for
surface
mounting

Manufacturer:

ELKO EP, L.t.d. / Palackého 493
Holešov - Všetuly 769 01 / Czech Republic
phone: +420 573 514 211 / e-mai: info@elkoep.com
www.elkoep.com



Order Code: 5160

Made in Czech Republic



8 595188 151603